

WELL SERVICE PUMPS



SOUTHERN
STIMULATION TECHNOLOGIES

AN AMERICAN BLOCK BRAND



American
Block
MANUFACTURING CO.



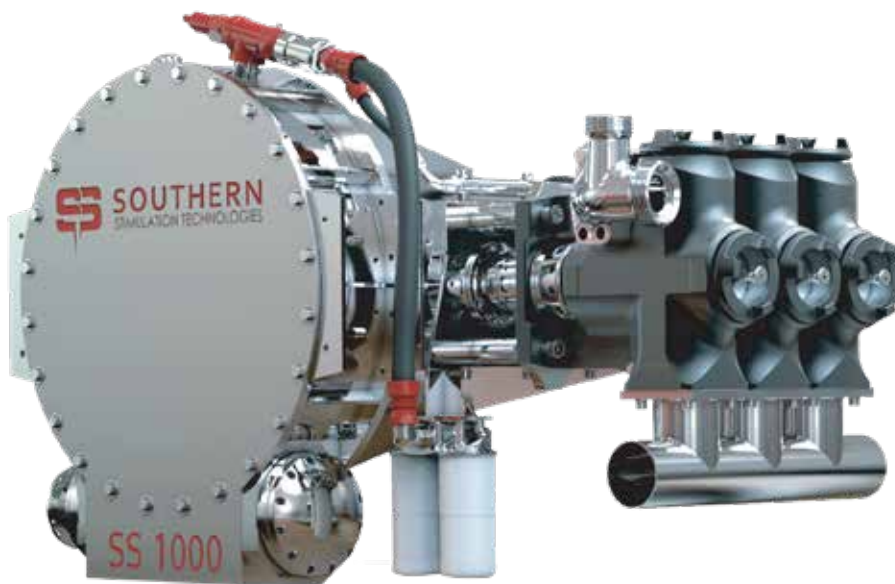
SOUTHERN
STIMULATION TECHNOLOGIES
AN AMERICAN BLOCK BRAND



Southern Stimulation Technology is now an American Block Company.

Southern Stimulation Technology has a long history of manufacturing the 8" stroke, 3 cylinder 600HP and 1000HP Triplex pressure pumps.

Adding these new product offerings to American Block's current pressure pumping portfolio of short-stroke 600HP Triplex and 1000HP Quintuplex pumps will enhance our ability to cover a wide range of pumping requirements from the customers.



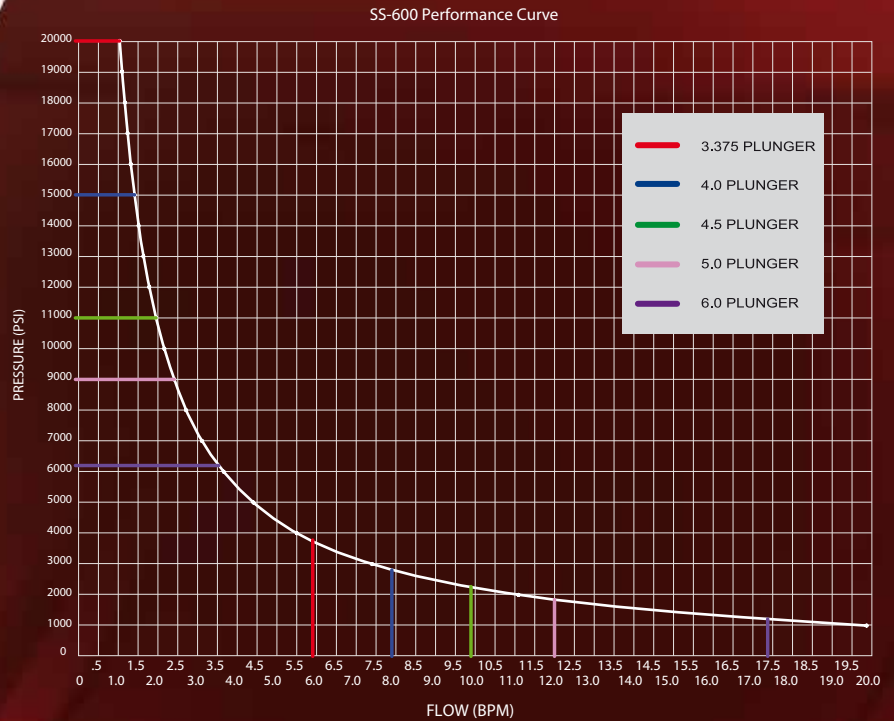
**American
Block**



SOUTHERN
STIMULATION TECHNOLOGIES
AN AMERICAN BLOCK BRAND

600 TRIPLEX

More info at www.southernstim.com



Ratings are based on 90% mechanical efficiency and 100% volumetric efficiency.

Trusted Design. Southern Approved.

Power End

Input Speed (Max)	2000 rpm
Gear Type	Worm-Wheel
Gear Ratio	8:1
Driveshaft Diameter	4" Worm
Maximum Crank Speed	265 rpm
Maximum Rod Loading	180,000 lb
Stroke	8"

Fluid End

Plunger Type	2 Piece Design
Valves Seats	Full Open Valve Design
Pressure Packing	Low Friction
Discharge Flanges	Straight, Elbow Fig. 1502/2002 connections

Case/Crank/Crosshead

Case	Weldment
Crankshafts	Forged Steel
Connecting Rods	Aerospace
Crossheads	Grade Aluminum
Crosshead Bearings	Steel
Oil Lubrication	Phosphor Bronze External Auxiliary Pump (32 gpm required)
Oil Filter	High Pressure, Replaceable Element
Oil Capacity	23 Gallon Synthetic
Weight (dry)	6,250 lb

Fluid End Size - Maximum Working Pressure

3-3/8"	20,000 psi
4"	15,000 psi
4-1/2"	11,200 psi
5"	9,000 psi
6"	6,300 psi

Southern Stimulation Technologies reserves the right to change or modify this information any time.

6311 Breen Road, Houston Texas 77086
281-820-5332 | www.southernstim.com

**American
Block**



SOUTHERN
STIMULATION TECHNOLOGIES
AN AMERICAN BLOCK BRAND

600 TRIPLEX

More info at www.southernstim.com

Trusted Design. Southern Approved.

Our **SS-600 Triplex** is a long proven well service pump designed to exceed your requirements in any application - cementing, acidizing, snubbing, well stimulation, and gravel packing. With an industry leading 8" stroke and 8:1 gear ratio the SS-600 is 30% more efficient than the competition while reducing downtime and completing the job without maximizing the standard duty cycle.

Key Benefits:

- Designed, Manufactured, and Assembled in the USA
- Modular Fluid End Design
- Solid One Piece Crank Shaft
- Worm and Wheel Style Gearing
- Lower Cost of Ownership

Application:

- General Pressure Pumping Applications
- Direct OEM Replacement for the Demay and Axon HD-500
- Interchangeable with the Halliburton HT-400
- Comparable with the SPM TWS-600, Gardner Denver GD-600 and Serva TPH 400 and TPD 600

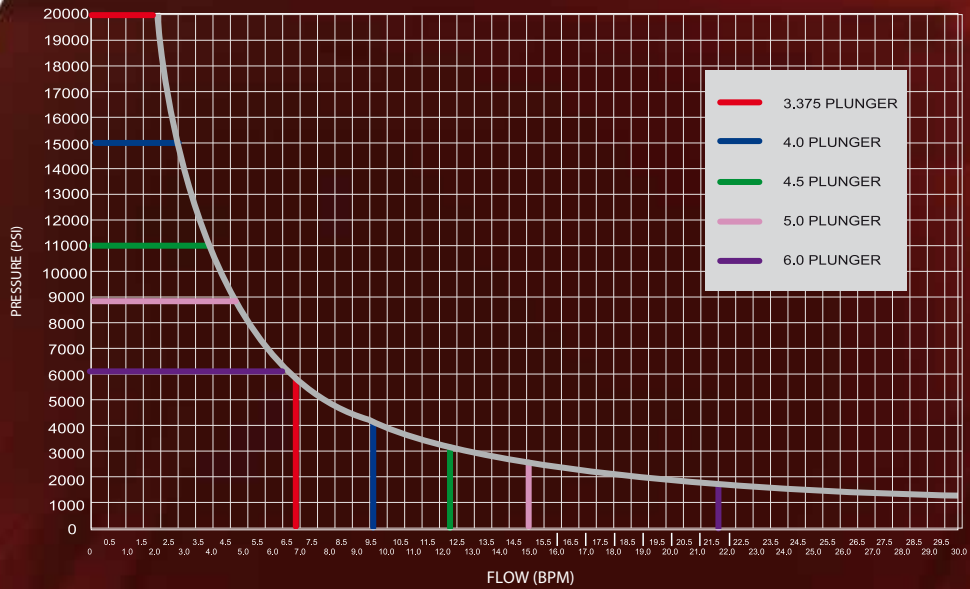
SS 600
TRIPLEX

6311 Breen Road, Houston Texas 77086
281-820-5332 | www.southernstim.com

**American
Block**

1000 TRIPLEX

SS-1000 Performance Curve



Ratings are based on 90% mechanical efficiency and 100% volumetric efficiency.

More info at www.southernstim.com



Advanced Pumping Starts with Southern.

Power End

Input Speed (Max)	2000 rpm
Gear Type	Worm-Wheel
Gear Ratio	6.667:1
Driveshaft Diameter	4.5" Worm
Maximum Crank Speed	300 rpm
Maximum Rod Loading	190,000 lb
Stroke	8"

Fluid End

Material	Stainless Steel
Plunger Type	2 Piece Design
Valves Seats	Full Open Valve Design
Pressure Packing	Low Friction
Discharge Flanges	Straight, Elbow Fig. 1502/2002 connections

Case/Crank/Crosshead

Case	Weldment
Crankshafts	Forged Steel
Connecting Rods	Aerospace Grade Aluminum
Crossheads	Steel
Crosshead Bearings	Phosphor Bronze
Oil Lubrication	External Auxiliary Pump (32 gpm required)
Oil Filter	High Pressure, Replaceable Element
Oil Capacity	23 Gallon Synthetic
Weight (dry)	6,900 lb

Fluid End Size - Maximum Working Pressure

3-3/8"	20,000 psi
4"	15,000 psi
4-1/2"	11,200 psi
5"	9,000 psi
6"	6,300 psi

Southern Stimulation Technologies reserves the right to change or modify this information any time.



SOUTHERN
STIMULATION TECHNOLOGIES
AN AMERICAN BLOCK BRAND

1000 TRIPLEX

More info at www.southernstim.com

Advanced Pumping Starts with Southern.

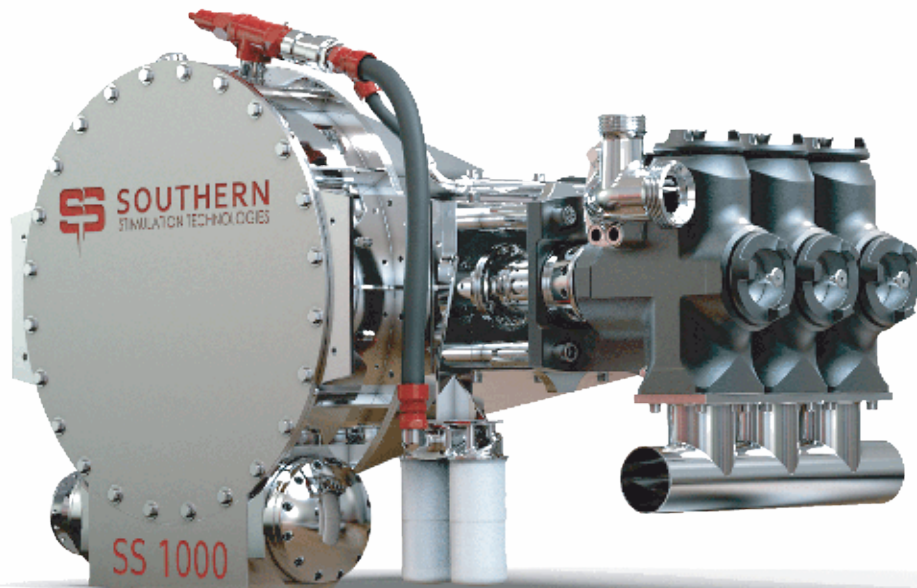
With a smaller footprint than quintuplex pumps, the well-proven **SS-1000 Triplex** pump provides increased performance over competitors in the same class. With an 8-inch stroke and 6.667:1 gear ratio you can achieve operating requirements with only three cylinders as opposed to the industry standard of five. The SS-1000 comes standard with Stainless Steel Fluid Ends.

Key Benefits:

- Designed, Manufactured and Assembled in the USA
- Modular Fluid End Design
- Solid One Piece Upgraded Crank Shaft
- Worm and Wheel Style Gearing
- Stainless Steel Fluid Ends Standard

Applications:

- Coil Tubing and other High Pressure Applications
- Direct OEM Replacement for the Axon HD-1000
- Comparable with SPM QWS-1000, GD-1000Q, Serva QPA-1000, MSI QIH-1000



6311 Breen Road, Houston Texas 77086
281-820-5332 | www.southernstim.com

**American
Block**

Southern Stimulation Technology is now an American Block Company.

Southern Stimulation Technologies is the oilfield's one of the trusted source for all pressure pumping needs – reliable pumping solutions guaranteed, standing behind our customer needs with excellent product performance. Southern Stimulation Technologies' well service pumps and equipment are manufactured to exceed performance standards. Our 600 and 1000 well service pumps are designed for high-pressure environment applications including cementing, acidizing, coil tubing and general pump applications. Having the longest stroke on the market today.

Southern Stimulation Technologies' pumps are 30% more efficient and have a lower total cost of ownership compared to the competition.

Southern Stimulation SS-600 pump is similar to that of Halliburton HT-400 pump. The Fluid End and fluid end internal parts are completely interchangeable with those of the Halliburton HT-400.



A

HOUSTON, TEXAS
CORPORATE HEADQUARTERS

ADDRESS
6311 BREEN ROAD
HOUSTON TEXAS, 77086
USA

PHONE
281-820-5332 / 1-800-572-9087

FAX
281-820-3861

E-MAIL
SALES@AMERICANBLOCK.COM

B

MIDDLE EAST
SALES OFFICE

ADDRESS
PO BOX 17235
JEBEL ALI, DUBAI
UNITED ARAB EMIRATES

PHONE
+971-48806535

FAX
+971-48806536

E-MAIL
SALES@ABCO-ME.COM



LICENSE & CERTIFICATION

American Petroleum Institute



4F-0384 6A-2309 7-1-1423 7K-0421 8C-0270 Q1-2398 ISO-2524

DNV TYPE APPROVAL - HAMMER UNIONS

American Block

American Block is an independent manufacturer of replacement parts. American Block is not affiliated in any way with any of the OEMs identified on this website. The use of the OEM names is for identification purposes only, and is not intended to cause confusion as to the source, identity, sponsorship, endorsement or qualities of the parts independently manufactured by American Block. BREWSTER, SKYTOP, CONTINENTAL EMSCO, DRECO, IDECO, NATIONAL OILWELL, SHAFFER, VARCO, AND WEBWILSON ARE THE TRADEMARKS OWNED BY NATIONAL OILWELL VARCO, LP AND ITS AFFILIATES.