

*When you finally see it...*

*SEISMIC IS AMAZING*



# Seismic Data Processing

global expertise and personalized service

Technology Driven | Customer Focused | Global Expertise

[absoluteimaging.ca](http://absoluteimaging.ca)

# Seismic Data Processing

global expertise and personalized service

Absolute Imaging Inc. is a Canadian seismic data processing company with international offices in Calgary, Canada and Noida, India. We have extensive worldwide imaging experience in complex basins from around the world.

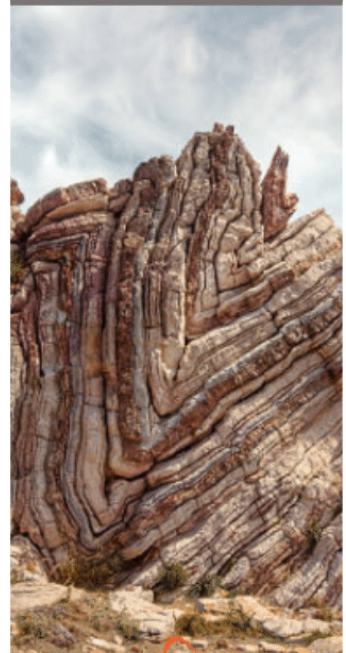
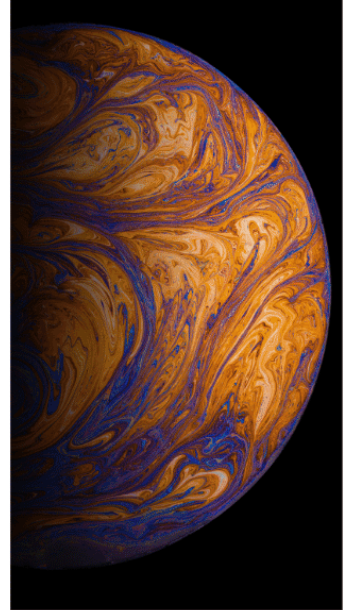
Absolute Imaging is large enough to efficiently process large 2D and 3D volumes and provide fast turnaround; but small enough to provide personalized customer service.

We provide a unique product offering backed up by a Research and Development team that produces robust algorithms to enable our geoscience staff to tackle the most complex imaging challenges

A key component of any processing center is the availability of a wide range of software solutions to tackle the many different data sets encountered. Absolute Imaging offers a combination of proprietary and third-party solutions that are built around Landmark's SeisSpace® software package. This combination of software solutions allows our users to effectively and efficiently process land, marine and transition zone 2D/3D/4D data.

Absolute Imaging can meet all of your seismic data processing needs including large and complex projects. Expertise and service offerings include:

- Land, Marine & Transition Zone Processing
- Stratigraphic, Structural and AVO processing
- Time Lapse (4D) Processing
- Multicomponent Processing
- Environmental Near Surface Imaging
- Advanced Imaging – Depth & Diffraction Imaging
- Comprehensive Research and Development Team





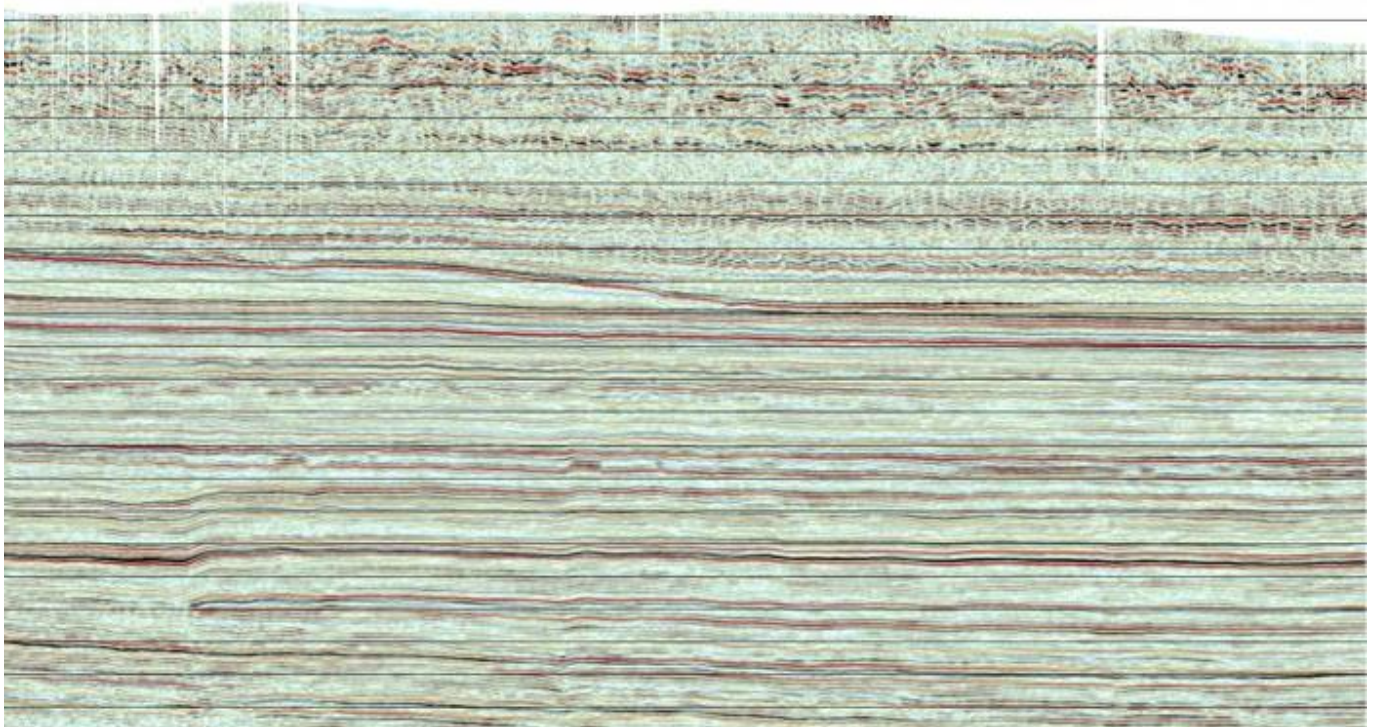
# Onshore Processing

global expertise and personalized service

Onshore seismic data processing techniques are divided into two distinct approaches, stratigraphic and structural, and require varying techniques / experience in order to reach the ultimate goal of creating the best image possible. Absolute Imaging specializes in AVO processing and has written proprietary algorithms to ensure data is amplitude friendly for additional inversion and reservoir characterization work.

## Stratigraphic

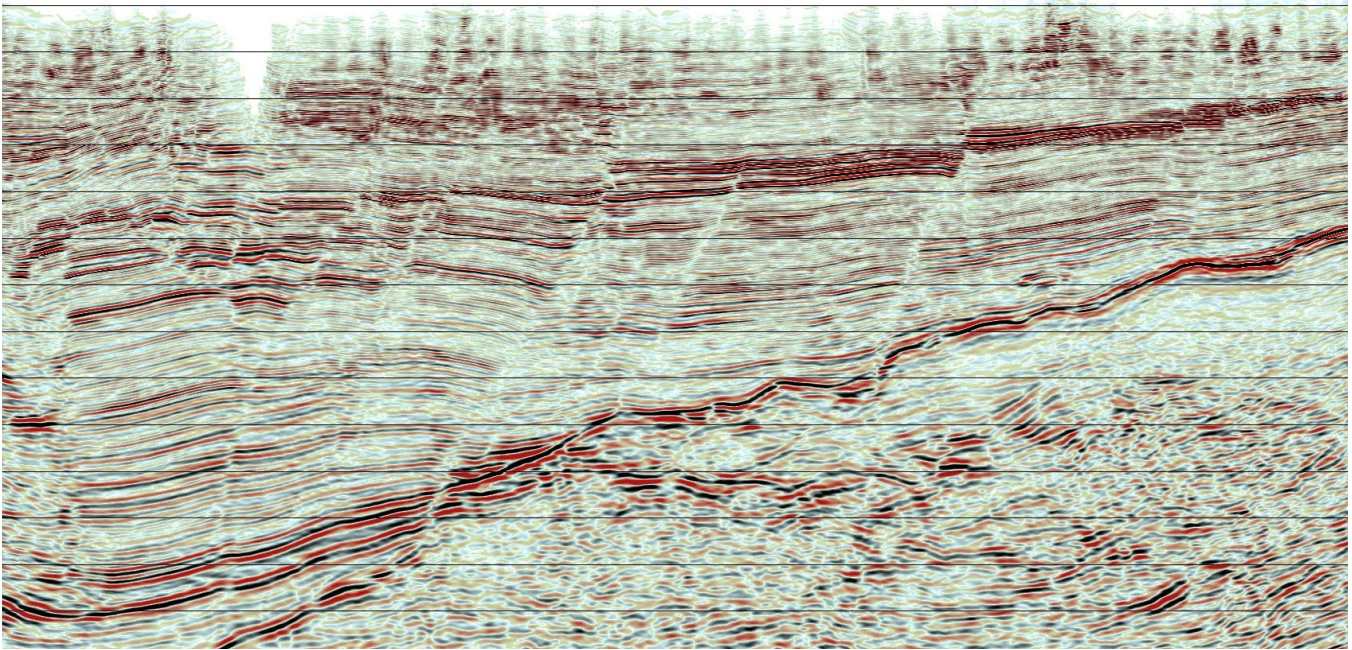
Reservoir delineation in stratigraphic plays can be subtle and detailed processing work is needed to mitigate risk. Robust surface consistent deconvolution routines are utilized to increase the frequency content of the data and provide phase stability. Powerful noise suppression techniques for both organized and random noise help uncover the underlying signal. When tying various vintages of 2D lines or 3D volumes, accurate phase and static tying is accomplished allowing mapping of thin horizons across a prospect. Our goal is to create seismic data that is well imaged, honours the true phase and amplitudes while extending the bandwidth in a geologically correct manner.



## Structural

Tectonically complex areas often have a complicated near surface, a structurally complex subsurface and generally poor signal to noise.

Therefore, processing of this data requires in-depth experience and a diverse set of robust algorithms such as full featured velocity analysis tools; tomographic near surface static solutions; linear, random and erratic noise suppression techniques along with robust time and depth imaging tools. Our goal is to create a seismic section that has good S/N while maintaining the structural integrity.



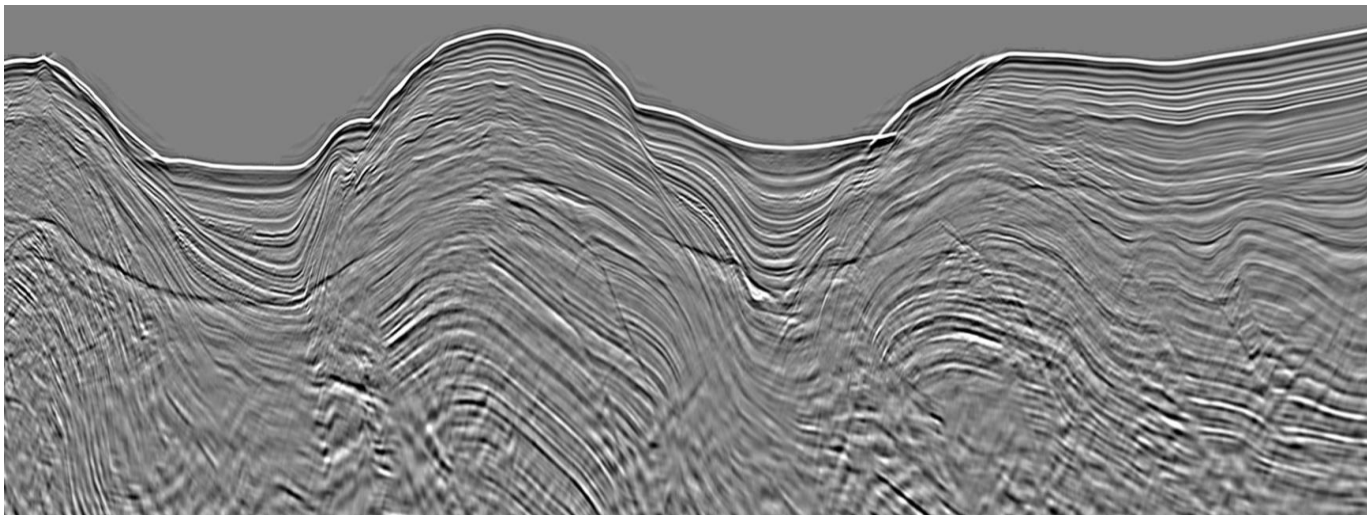


# Offshore Processing

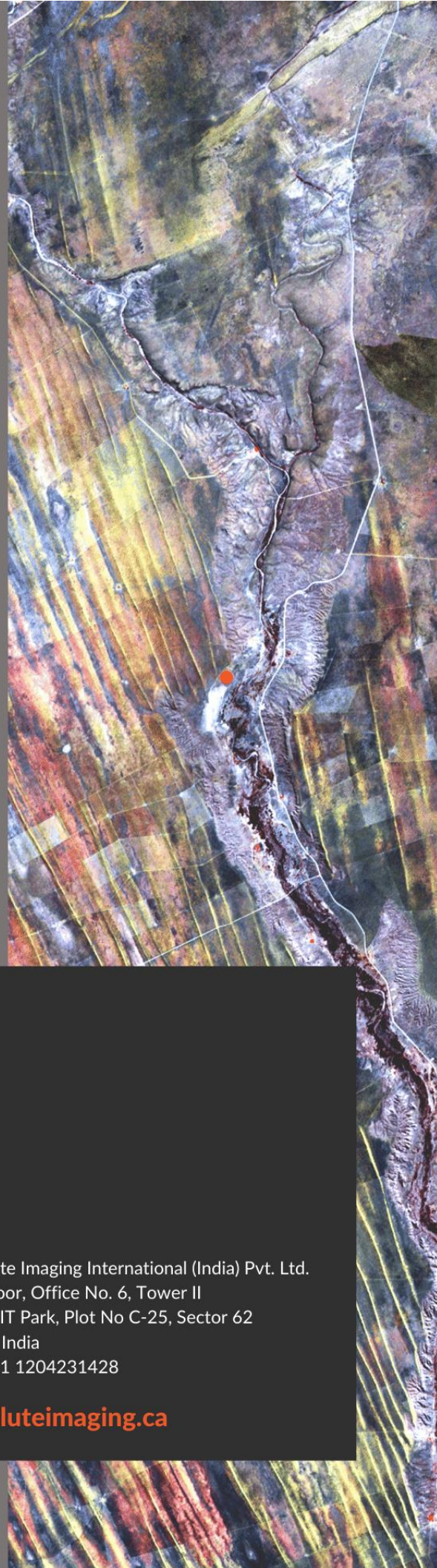
global expertise and personalized service

Absolute Imaging has both advanced marine processing tools and expertise to deal with the complex marine imaging environment, which ranges from shallow to deep waters and includes Transition Zones.

To tackle different types of multiples we have developed advanced multiple suppression technologies including MWD, SRME, IME and HRRT. We also have a variety of noise suppression techniques available to deal with linear, swell, erratic and random noise. To broaden the bandwidth and enhance the interpretability, we have implemented our proprietary shot and receiver de-ghosting techniques in our marine processing. To aid in proper imaging of the geologic target in either Time or Depth, we have accurate Velocity Analysis and advanced APSTM and APSDM imaging technologies with various migrators such as Kirchhoff, Advanced BEAM, WEM & RTM. All of the above technologies are available for towed streamer and OBN/OBC data.



Our marine experience extends to areas worldwide including the Alboran Sea, the Baltic Sea, Brazil, East Coast USA, Morocco, and the Oman Sea. In Canadian waters, our experience includes the Beaufort Sea, British Columbia (Nass Bay & Fraser River), offshore East Coast of Canada including Bay of Fundy, Gulf of St. Lawrence, Grand Banks, Sable Island and the Flemish Pass.



Absolute Imaging Inc.  
Suite 600, 940 – 6th Avenue SW  
Calgary, Alberta  
Canada, T2P 3T1  
Tel: 1.403.245.3001

[info@absoluteimaging.ca](mailto:info@absoluteimaging.ca)

Absolute Imaging International (India) Pvt. Ltd.  
2nd Floor, Office No. 6, Tower II  
Stellar IT Park, Plot No C-25, Sector 62  
Noida, India  
Tel: +91 1204231428

[absoluteimaging.ca](http://absoluteimaging.ca)